

6594

Scale: 1" = 100'  
Graphic Scale  
(in feet)

Charles F. ...  
Anna L. Mullaney  
Vol. 765, Pg. 823  
DRCCCT

FFF Preston Hills III, LTD  
Clerk's File No.  
97-0036319

Georgina Hennen  
Vol. 3135, Pg. 704  
DRCCCT

Bob L. &  
Cheryl P. Walker  
Vol. 3205, Pg. 256  
DRCCCT

Prosper Land Company, LTD  
Vol. 4748, Pg. 2254  
DRCCCT

Prosper Land Company, LTD  
Vol. 4748, Pg. 2254  
DRCCCT

COUNTY ROAD No. 80

COUNTY ROAD No. 122

POINT OF BEGINNING

COUNTY ROAD No. 122

COUNTY ROAD No. 81

Mary E. Robinson  
Vol. 384, Pg. 450  
DRCCCT

WILLIAM BUTLER SURVEY  
ABSTRACT No. 112

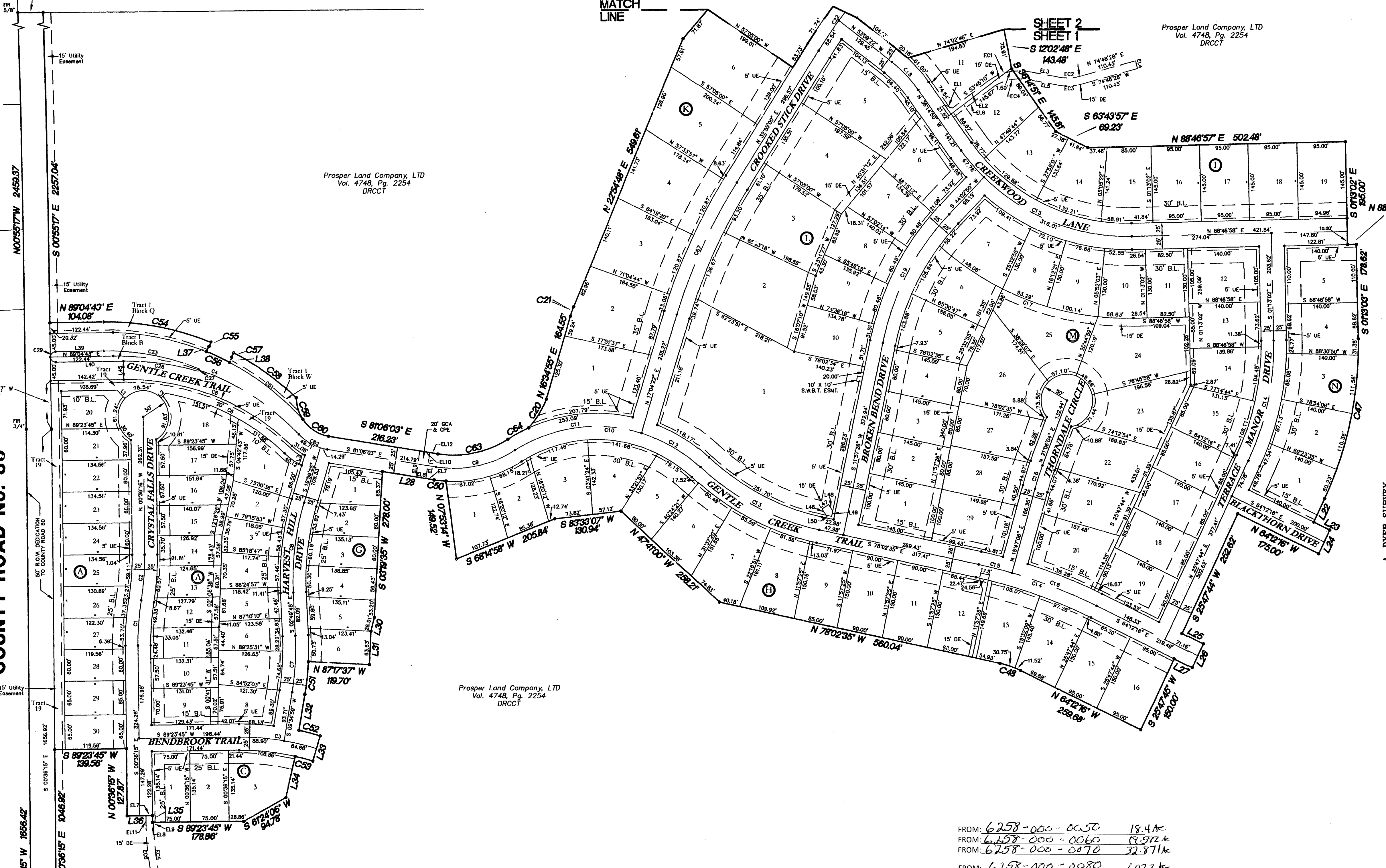
Mae Smith Star &  
Harold Star, Jr.  
Vol. 761, Pg. 280  
DRCCCT

WILLIAM H. THOMASON SURVEY  
ABSTRACT No. 895

Prosper Land Company, LTD  
Vol. 4748, Pg. 2254  
DRCCCT

MATCH LINE

SHEET 2  
SHEET 1



FROM: 6258-000-0050	18.4A
FROM: 6258-000-0060	19.57A
FROM: 6258-000-0070	32.811A
FROM: 6258-000-0080	1022A
FROM: 6376-000-0030	1.687A
FROM: 6376-000-0040	15.1A
FROM: 6376-000-0260	0.7A
FROM: /	/
FROM: /	/

S4880

NOTES  
BEARINGS ESTABLISHED UTILIZING GLOBAL POSITIONING METHODS.  
UNLESS OTHERWISE NOTED, ALL PERIMETER BOUNDARY CORNERS, LOT CORNERS, POINTS OF CURVATURE, TANGENCY AND POINTS OF INTERSECTION ARE 5/8-INCH IRON RODS WITH PLASTIC CAP STAMPED "SPARR SURVEYS".  
THERE SHALL BE A 5 FOOT WIDE UTILITY EASEMENT ACROSS THE FRONT OF EACH LOT, ADJACENT TO THE STREET RIGHT-OF-WAY.  
THE FOLLOWING TRACTS ARE HEREBY DEDICATED TO AND SHALL BE MAINTAINED BY THE GENTLE CREEK HOMEOWNERS ASSOCIATION:  
Tract 19 Block A  
Tract 19 Block B  
Tract 22 Block K  
Tract 23 Block K  
Tract 1 Block L  
Tract 1 Block Q  
Tract 1 Block W  
Tract 15 Block J

OWNER  
PROSPER LAND COMPANY, LTD  
P.O. Box 802331  
DALLAS, TEXAS 75380-2331

DRAWN BY: B.D.S./CAD  
CHECKED BY: B.D.S.  
SCALE: 1" = 100'  
DATE: JULY 2001  
SHEET 1 OF 5  
JOB NO. 17000

FINAL PLAT  
GENTLE CREEK ESTATES  
PHASE THREE  
A. DYER SURVEY, ABSTRACT 258  
W.T. HORN SURVEY, ABSTRACT 376  
W.T. HORN SURVEY, ABSTRACT 419  
TOWN OF PROSPER  
COLLIN COUNTY, TEXAS

Sparr Surveys  
803 E. Main Street, Suite C  
P.O. Box 1270  
Allen, Texas 75013-1270  
972/390-9936